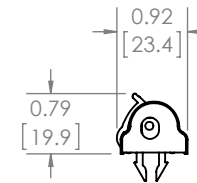
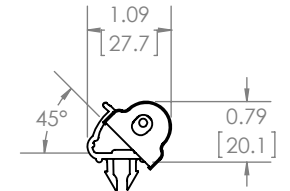


SNAP INTO 3/8 SQUARE CUTOUT



FLUSH MOUNTED



ANGLE MOUNTED

TOTAL POWER; 12V DC @ .14 A

**PROPRIETARY AND CONFIDENTIAL**

THE INFORMATION CONTAINED IN THIS DRAWING IS THE SOLE PROPERTY OF SANUS SYSTEMS, A PRODUCT DIVISION OF MILESTONE AV TECHNOLOGIES. ANY REPRODUCTION IN PART OR AS A WHOLE WITHOUT THE WRITTEN PERMISSION OF SANUS SYSTEMS IS PROHIBITED.

专有且机密资料

本信息属 SANUS SYSTEMS 公司专属财产, 非经 SANUS SYSTEMS 书面许可, 严禁复制其中任何内容

TEMPLATE REV 模板修订版: 06

NAME 姓名 DATE 日期

ENGINEER 工程师 JBA 6/22/2011

DESIGNER 设计师 JBA 6/22/2011

APPROVED 批准 DG 6/22/2011

NOTES 注释:

in[mm]

SHEET 1 OF 第 1

**SANUS**  
FOUNDATIONS

DESCRIPTION 描述:

CALW01