

## OSSE1A1KIT

### Speaker Stand Bracket Kit For SONOS® Era 100™

Converts speaker stand models;  
OSSA1, OSSA2, WSSA1, WSSA2  
for use with SONOS® Era 100™

#### INSTRUCTION MANUAL

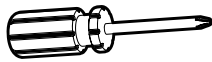
#### We'll Make It Stress-Free

If you have any questions along the way, just give us a call.

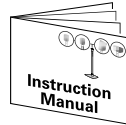
**US:** +1 (800) 359-5520 • **EMEA:** +31 (0) 495 580 852 • **UK:** +44 (0) 800 056 2853

We're ready to help!

#### Tools Needed



Screwdriver



Speaker Stand Instruction Manual  
(OSSA1, OSSA2, WSSA1 or WSSA2)

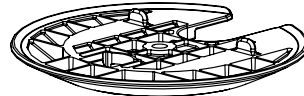
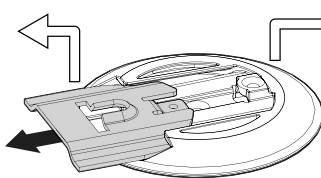
#### Included in the Kit

**⚠ WARNING:** This product contains small items that could be a choking hazard if swallowed. Before starting assembly, verify all parts are included and undamaged. If any parts are missing or damaged, do not return the damaged item to your dealer; contact Customer Service. Never use damaged parts!



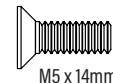
Top Bracket

**1** x1



Speaker Bracket

**2** x1



M5 x 14mm

Speaker/Bracket  
Screw

**3** x2



10-24 x 3/8 in.

Securement  
Screw

**4** x1

**Legrand AV Inc.**  
6436 City West Parkway  
Eden Prairie, MN 55344 USA

**US:** +1 (800) 359-5520

**Legrand AV Netherlands B.V.**  
Franklinstraat 14  
6003 DK Weert Netherlands

**UK:** +44 (0) 800 056 2853

**EMEA:** +31 (0) 495 580 852

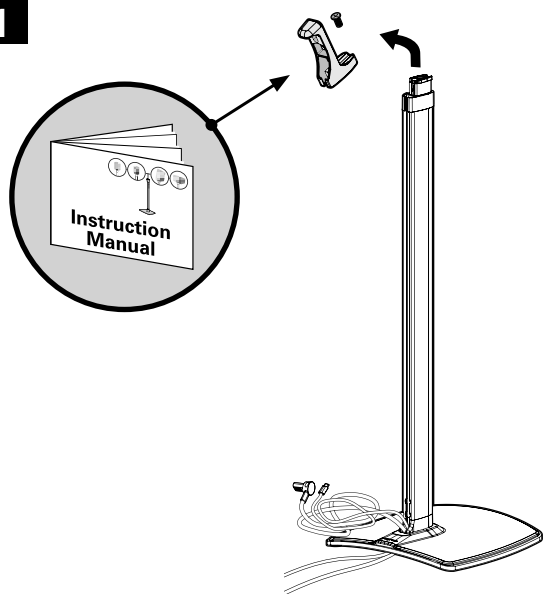
**Authorized Representative for the UK**  
Starline Holding Technology Ltd.  
Unit C Island Road  
Reading RG2 0RP UK

Legrand AV Inc. and its affiliated corporations and subsidiaries (collectively, "Legrand"), intend to make this manual accurate and complete. However, Legrand AV makes no claim that the information contained herein covers all details, conditions, or variations. Nor does it provide for every possible contingency in connection with the installation or use of this product. The information contained in this document is subject to change without notice or obligation of any kind. Legrand AV makes no representation of warranty, expressed or implied, regarding the information contained herein. Legrand AV assumes no responsibility for accuracy, completeness or sufficiency of the information contained in this document.

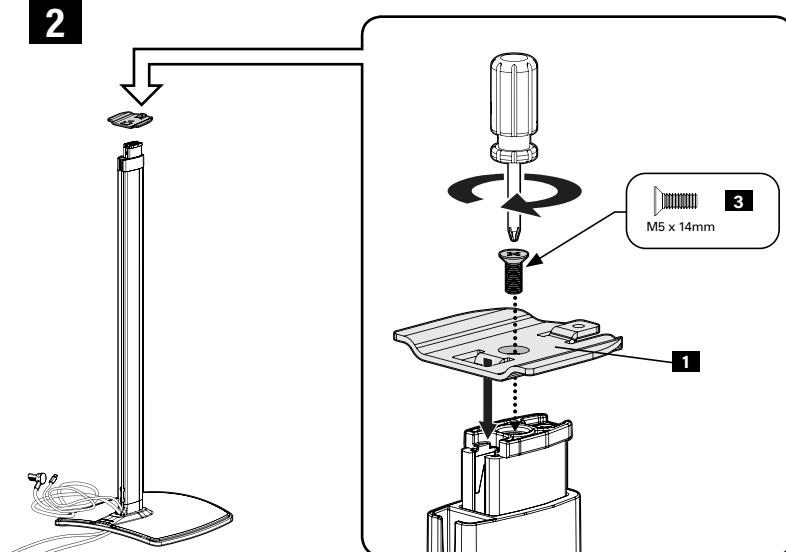
©2024 Legrand AV Inc. All rights reserved. SANUS is a brand of Legrand.  
All other brand names or marks are used for identification purposes and are trademarks of their respective owners.

**Legrand AV Inc.** • 6436 City West Parkway • Eden Prairie, MN 55344 USA

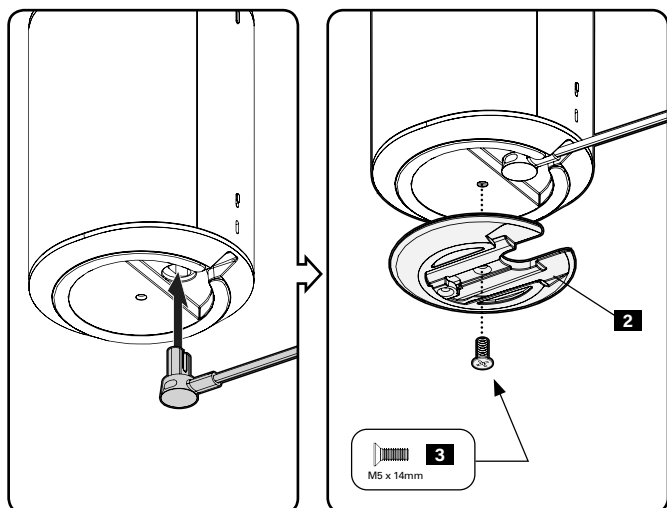
1



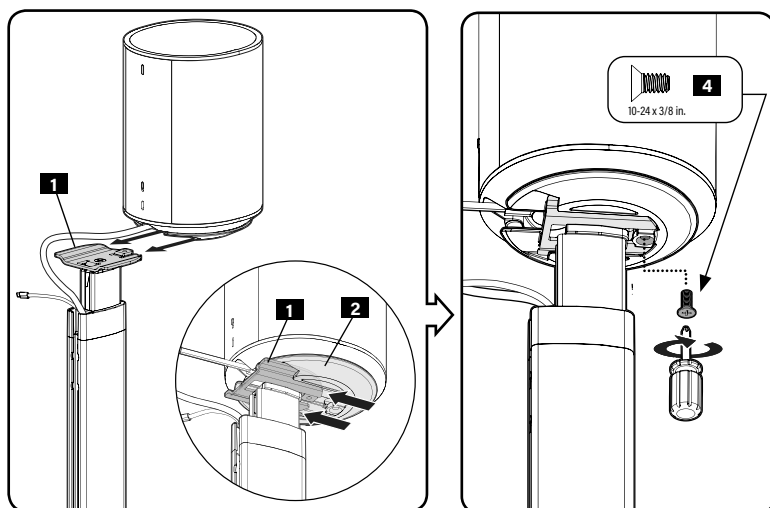
2



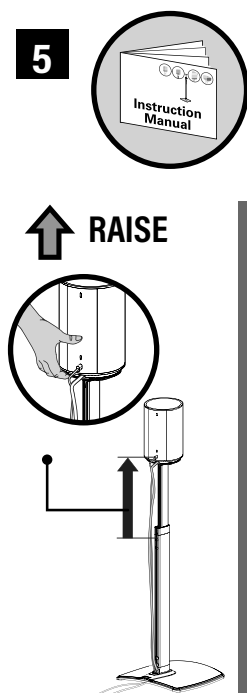
3



4

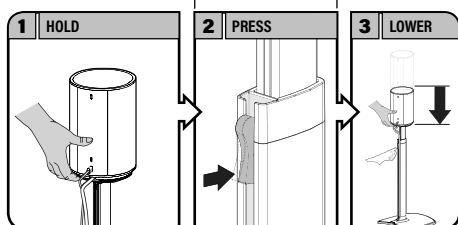


5



↓ LOWER

**CAUTION:** Avoid potential personal injuries and property damage! Hold upper post BEFORE pressing trigger button. Trigger button is removable to prevent accidental lowering, or to route cables into post (STEP 6).



6

