

# ADVANCED FULL-MOTION PREMIUM WALL MOUNT FOR TVS 19" - 40"

*High-end performance meets high-end design*

The Advanced Full-Motion Premium TV Mount is a next-generation mount that incorporates the TV into a home in an entirely modern way. Featuring a stylish brushed metal finish and slim profile, the Advanced Full-Motion Mount complements the sleek look of today's TVs. Beneath the mount's exterior is a precision-engineered, ultra-strong solid steel frame – ensuring the TV stays securely in place.

Expertly engineered with FluidMotion™ design, the Advanced Full-Motion Mounts provide unparalleled smoothness – allowing for effortless extension and swivel. The mount's Steady Set™ functionality holds the TV in place – eliminating drift and unwanted TV movement. The simple and intuitive design guarantees a quick and hassle-free installation.



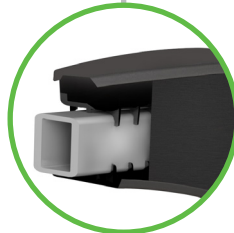
Stylish brushed metal exterior seamlessly blends with TV and décor



Steady Set™ holds TV in exact position – preventing drift and unwanted TV movement



Slim full-motion mount sits just 1.8" from the wall in home position accentuating the sleek look of ultra-thin TVs



Precision-engineered, ultra-strong, solid steel frame provides maximum support



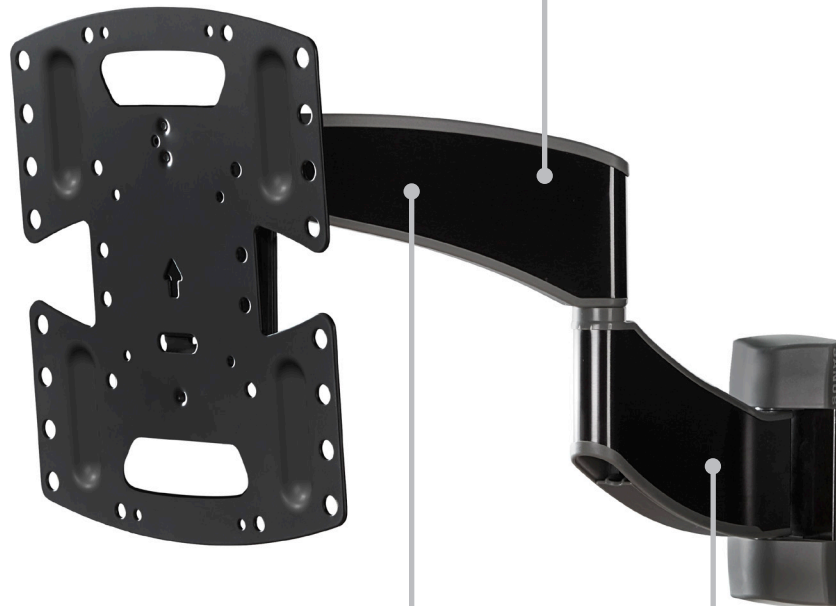
In-arm cable management creates a clean look



Virtual Axis™ provides fingertip tilt



FluidMotion™ design provides effortless TV movement



**SPECIFICATIONS**

**PRODUCT DIMENSIONS (W X D X H)**

8.66" x 1.8" x 11.64"  
22cm x 4.57cm x 29.57cm

**TV SIZE / WEIGHT CAPACITY**

35 lbs. / 15.88kg

**MINIMUM DEPTH FROM WALL**

1.80" / 4.57cm

**EXTENSION**

16" / 40.64cm

**MOUNTING PATTERN (VESA)**

75x75, 100x100, 200x200

**PACKAGE DIMENSIONS (W X D X H)**

12.06" x 10.77" x 2.52"  
30.63cm x 27.36cm x 6.40cm

**PACKAGE WEIGHT**

7.4 lbs / 3.4kg

**MASTER PACK QTY**

4

**MASTER PACK DIMENSIONS (W X D X H)**

12.73" x 11.12" x 11.77"  
32.33cm x 28.24cm x 29.90cm

**MASTER PACK WEIGHT**

32.2 lbs / 14.6kg

**MSRP**

\$104.99

**LIST PRICE**

\$119.99

**AVAILABLE**

August 2019

**FINISHES**

Brushed Black Stainless, VSF716-B2  
Brushed Silver Stainless, VSF716-S2

**UPC**

Black: 793795533593  
Silver: 793795533623



**ADDITIONAL FEATURES:**

- Up to 15° of tilt and 90° of swivel left to right for ultimate viewing flexibility
- Easily level TV after installation
- Safety-tested, UL-listed and features a 10-year limited warranty
- All hardware and drilling template included



BRUSHED SILVER STAINLESS

