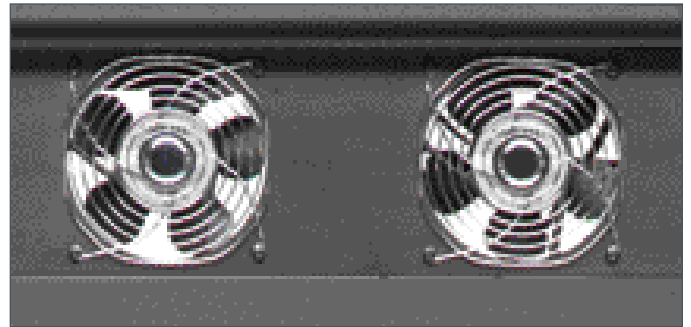


# NEW FOUNDATIONS® COMPONENT SERIES ACCESSORIES

## Introducing new fully customizable AV rack solutions

Foundations Component 500 and 100 Series racks were designed to support multiple add-on accessories, allowing you to create the perfect rack for your needs and AV system. 100 Series racks are pre-assembled and support select accessories for a more personalized solution. Component 500 Series rack frames come open and ready to customize for a unique rack tailor-made for your installation.



Fan detail shown



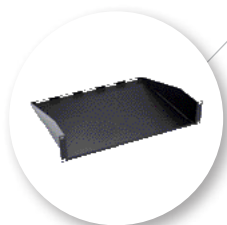
Fan kit keeps components cool, even in an enclosed cabinet



Choose from three locking door options to suit any installation



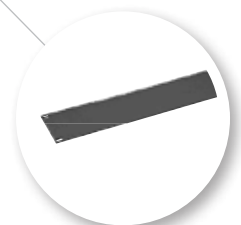
2U and 4U sliding drawers slide out for easy access to components



1U, 2U and 3U shelves support any combination of AV gear



Model CFR518 shown



1U, 2U and 3U blanking panels maintain consistent airflow to prevent improper cooling or heating

# NEW FOUNDATIONS® COMPONENT SERIES ACCESSORIES

## 500 SERIES ACCESSORIES

### FOR MODEL CFR535

**MODEL CFR535DP-B1**  
Locking Acrylic Door with  
solid steel frame for CFR535  
**LIST PRICE**  
\$579.<sup>99</sup>



**MODEL CFR535DS-B1**  
Locking Solid Steel Door  
for CFR535  
**LIST PRICE**  
\$249.<sup>99</sup>



**MODEL CFR535DR-B1**  
Locking Vented Rear Door  
for CFR535  
**LIST PRICE**  
\$199.<sup>99</sup>



**MODEL CFR535RR-B1**  
Rear Rack Rails for CFR535  
**LIST PRICE**  
\$84.<sup>99</sup>



### FOR MODEL CFR524

**MODEL CFR524DP-B1**  
Locking Acrylic Door with  
solid steel frame for CFR524  
**LIST PRICE**  
\$399.<sup>99</sup>



**MODEL CFR524DS-B1**  
Locking Solid Steel Door  
for CFR524  
**LIST PRICE**  
\$199.<sup>99</sup>



**MODEL CFR524DR-B1**  
Locking Vented Rear Door  
for CFR524  
**LIST PRICE**  
\$174.<sup>99</sup>



**MODEL CFR524RR-B1**  
Rear Rack Rails for CFR524  
**LIST PRICE**  
\$59.<sup>99</sup>



### FOR MODEL CFR518

**MODEL CFR518DP-B1**  
Locking Acrylic Door with  
solid steel frame for CFR518  
**LIST PRICE**  
\$339.<sup>99</sup>



**MODEL CFR518DS-B1**  
Locking Solid Steel Door  
for CFR518  
**LIST PRICE**  
\$174.<sup>99</sup>



**MODEL CFR518DR-B1**  
Locking Vented Rear Door  
for CFR518  
**LIST PRICE**  
\$149.<sup>99</sup>



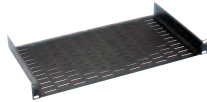
**MODEL CFR518RR-B1**  
Rear Rack Rails for CFR518  
**LIST PRICE**  
\$49.<sup>99</sup>



## 500 & 100 SERIES ACCESSORIES

### FOR MODELS CFR535, CFR524, CFR518, CFR127, CFR115

**MODEL CASH1-B1**  
1U Shelf, holds 20 lbs  
Depth: 10"  
**LIST PRICE** \$34.<sup>99</sup>



**MODEL CASH2-B1**  
2U Shelf, holds 50 lbs  
Depth: 14.5"  
**LIST PRICE** \$69.<sup>99</sup>



**MODEL CASH3-B1**  
3U Shelf, holds 80 lbs  
Depth: 14.5"  
**LIST PRICE** \$74.<sup>99</sup>



**MODEL CASBP1-B1**  
1U Steel Blanking Panel  
**LIST PRICE** \$12.<sup>99</sup>



**MODEL CASBP2-B1**  
2U Steel Blanking Panel  
**LIST PRICE** \$14.<sup>99</sup>



**MODEL CASBP3-B1**  
3U Steel Blanking Panel  
**LIST PRICE** \$19.<sup>99</sup>



**MODEL CAAB1-B1**  
1U Aluminum Blanking Panel  
**LIST PRICE** \$24.<sup>99</sup>



**MODEL CAAB2-B1**  
2U Aluminum Blanking Panel  
**LIST PRICE** \$29.<sup>99</sup>



**MODEL CAAB3-B1**  
3U Aluminum Blanking Panel  
**LIST PRICE** \$37.<sup>99</sup>



**MODEL CADR2-B1**  
2U Sliding Drawers; 3.5" deep  
**LIST PRICE** \$144.<sup>99</sup>



**MODEL CADR4-B1**  
4U Sliding Drawers; 7" deep  
**LIST PRICE** \$174.<sup>99</sup>



**MODEL CASC25-B1**  
25 Extra Screws  
**LIST PRICE** \$9.<sup>99</sup>



**MODEL CASC100-B1**  
100 Extra Screws  
**LIST PRICE** \$34.<sup>99</sup>



**MODEL CASC500-B1**  
500 Extra Screws  
**LIST PRICE** \$89.<sup>99</sup>



**MODEL CAFP2-B1**  
Fan Kit  
**LIST PRICE** \$174.<sup>99</sup>



**MODEL CALS45-B1**  
Lacing Strips; 78.75" long  
**LIST PRICE** \$29.<sup>99</sup>



**MODEL CATBL10-B1**  
Tie Bars  
**LIST PRICE** \$44.<sup>99</sup>



**MODEL CATB010-B1**  
Tie Bars  
**LIST PRICE** \$84.<sup>99</sup>



**MODEL CACT100-B1**  
Wire Ties  
**LIST PRICE** \$24.<sup>99</sup>

